

SRACA's Coral Anniversary

35 years

Research

Learning

Sustainability

Resilience



35 years ago....



PETER + ELAINE FORSTER

Coral reefs



Guidance

- Code of Good Manufacturing Practice
- AS/NZS 4187
- ISO standards
 - Robyn Williams

And when things
go wrong?



Moreton Bay corals

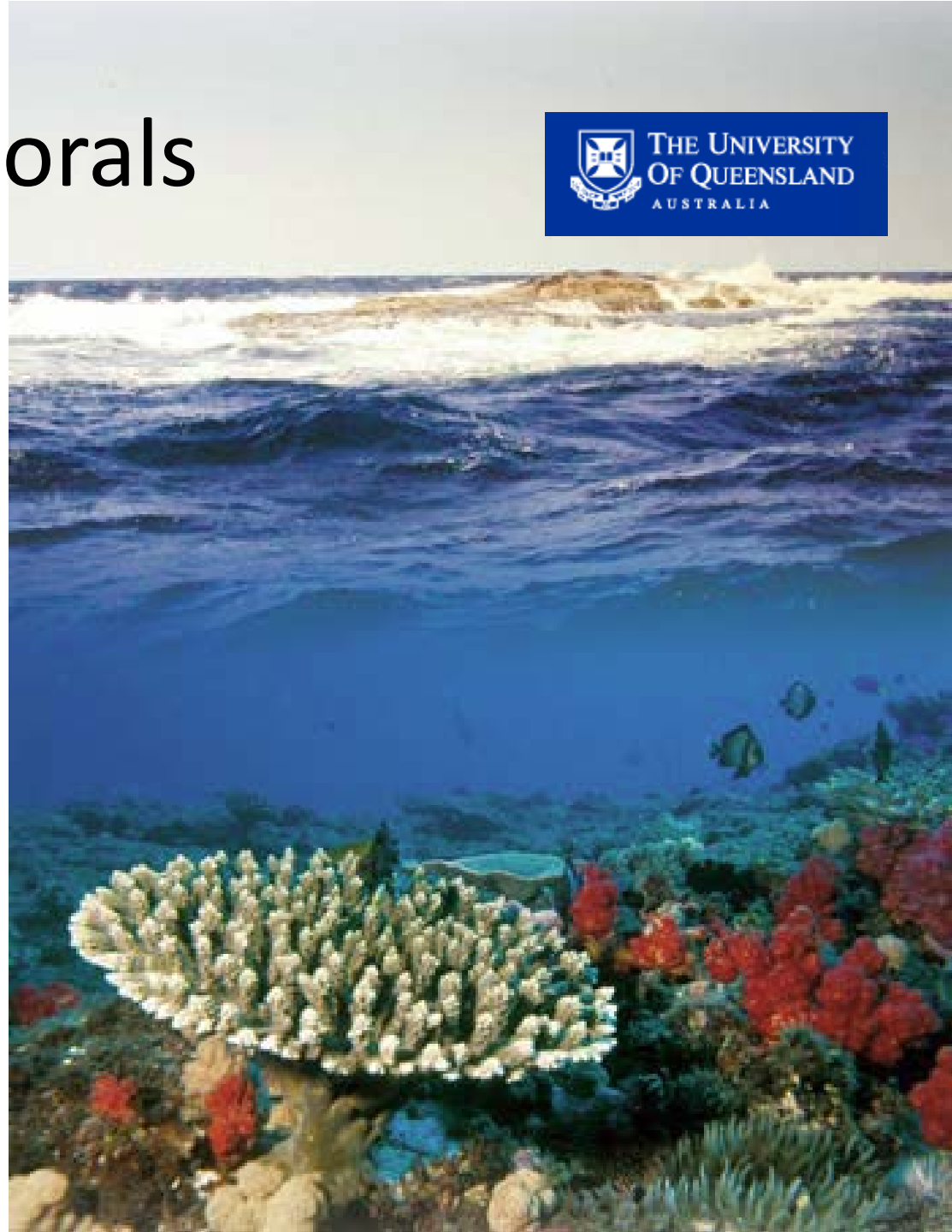


Resilience?

Recovery

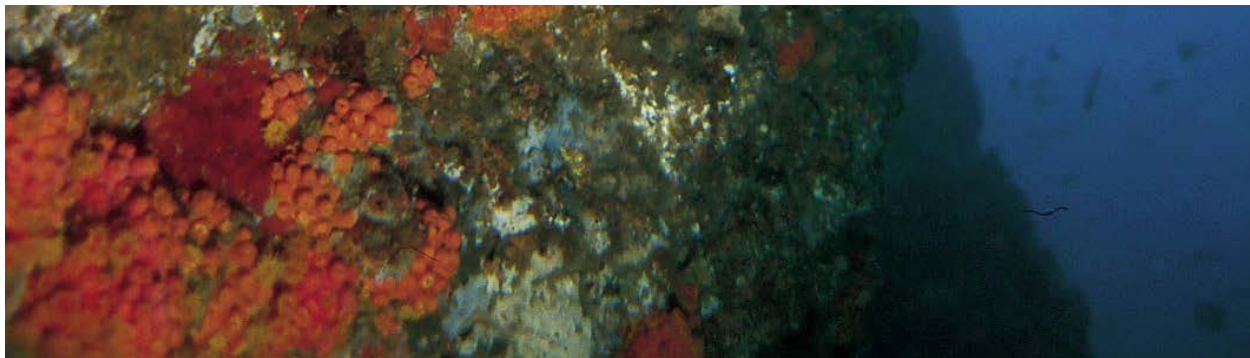
Hope

Norm Duke
Centre for Marine Studies
Level 8, Gehrmann Laboratories
The University of Queensland
Brisbane QLD 4072 Ph. +61 7 3365
2729
Fax +61 7 3365 4755
n.duke@uq.edu.au



Sustainability and our business

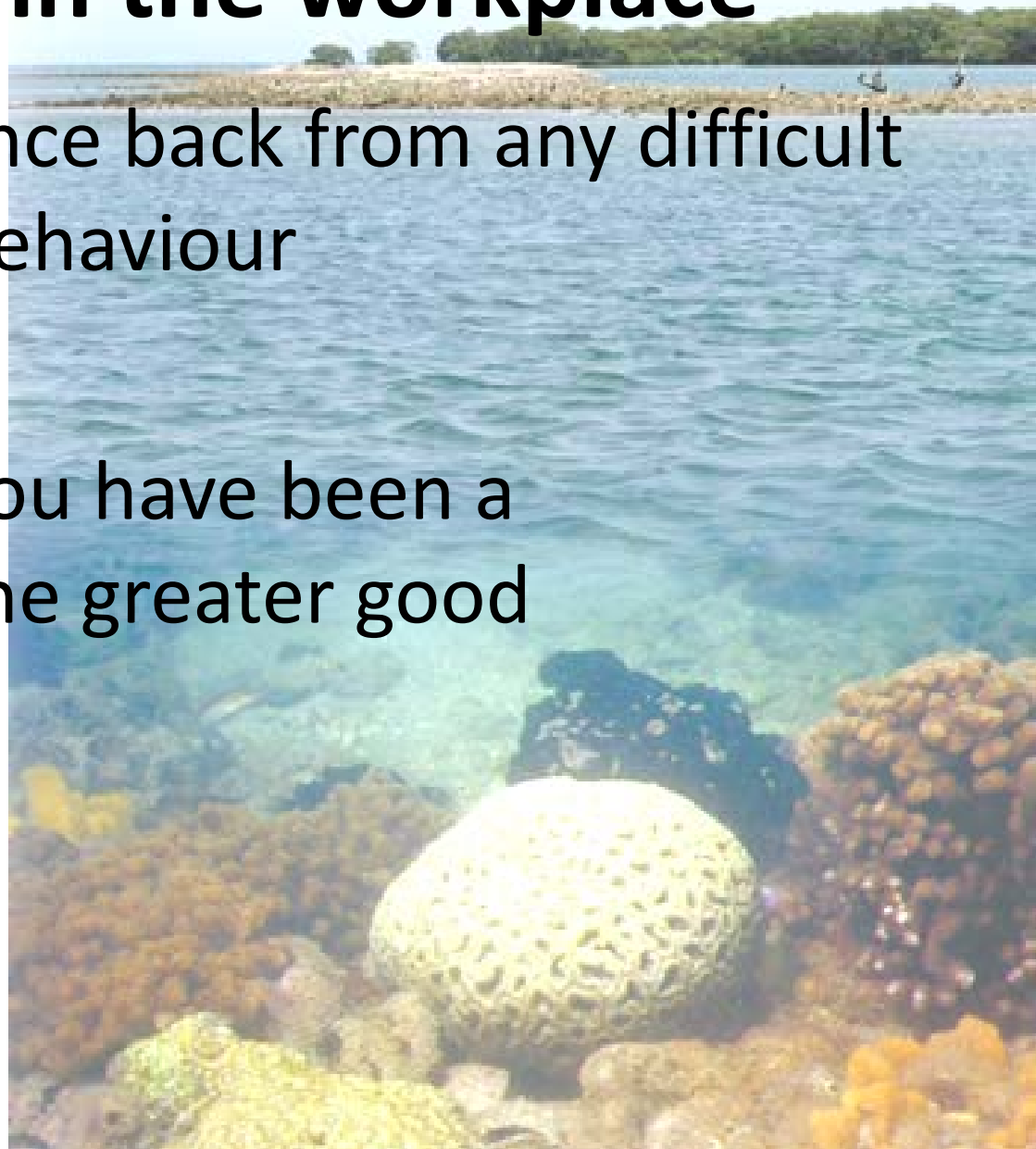
- What to buy?? “First, ask your girlfriends!”
- Business planning: collecting data following a process
 - electronic tracking: Mary Purcer, David McNamara
 - Business planning processes: Kate Veach



Resilience in the workplace

The ability to bounce back from any difficult or challenging behaviour

Job satisfaction: you have been a contributor to the greater good



Resilience in the workplace

www.preftrain.com.au/training-courses/negotiation/resilience-in-the-workplace/

www.bravofitness.com.au/testimonials.html



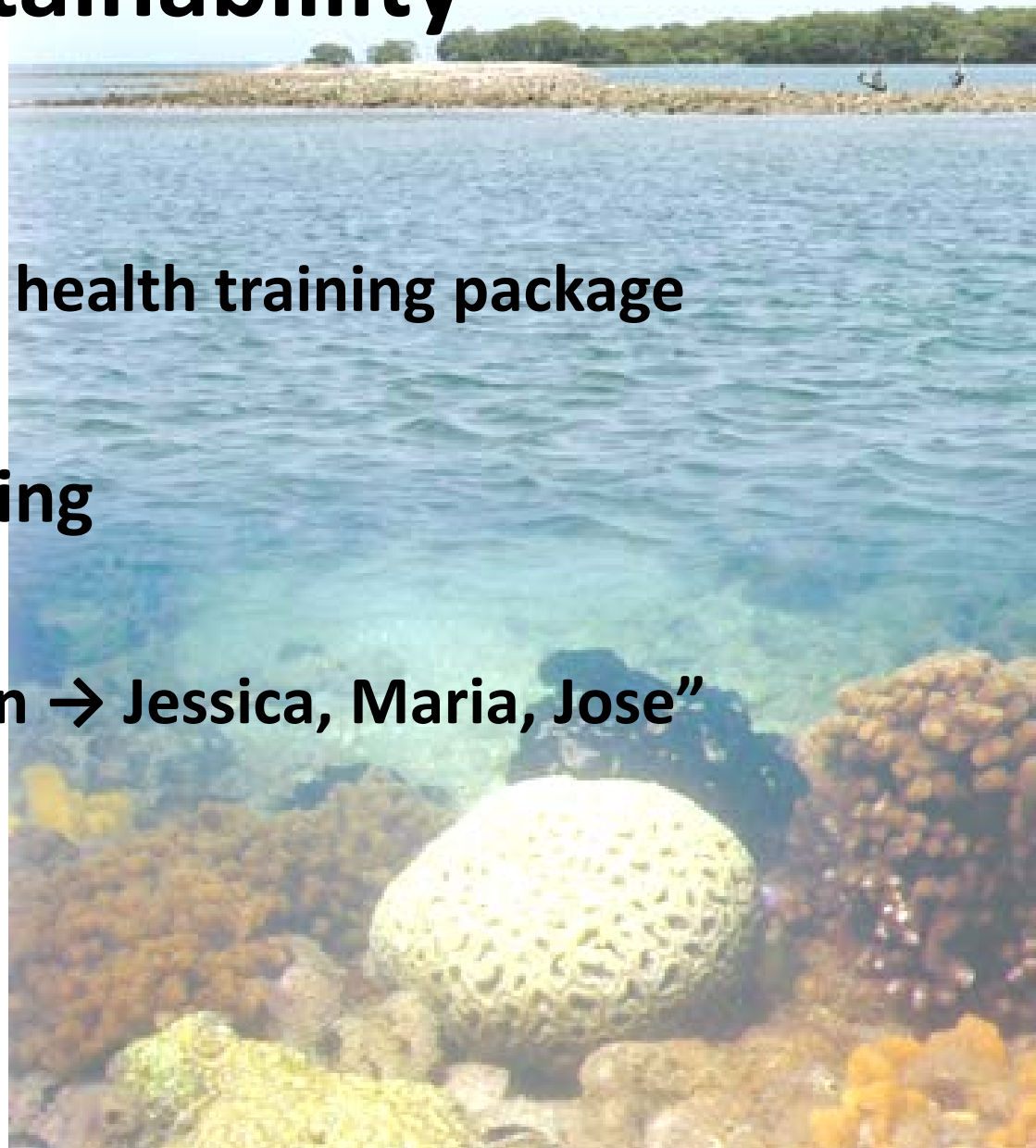
Research

- **Eg Packaging: Elinor and Robyn**
- **WFHSS**
- **Journals**
 - **Sterilisation in Australia**
 - **Central Sterilisation (“Zentral...”)**



Sustainability

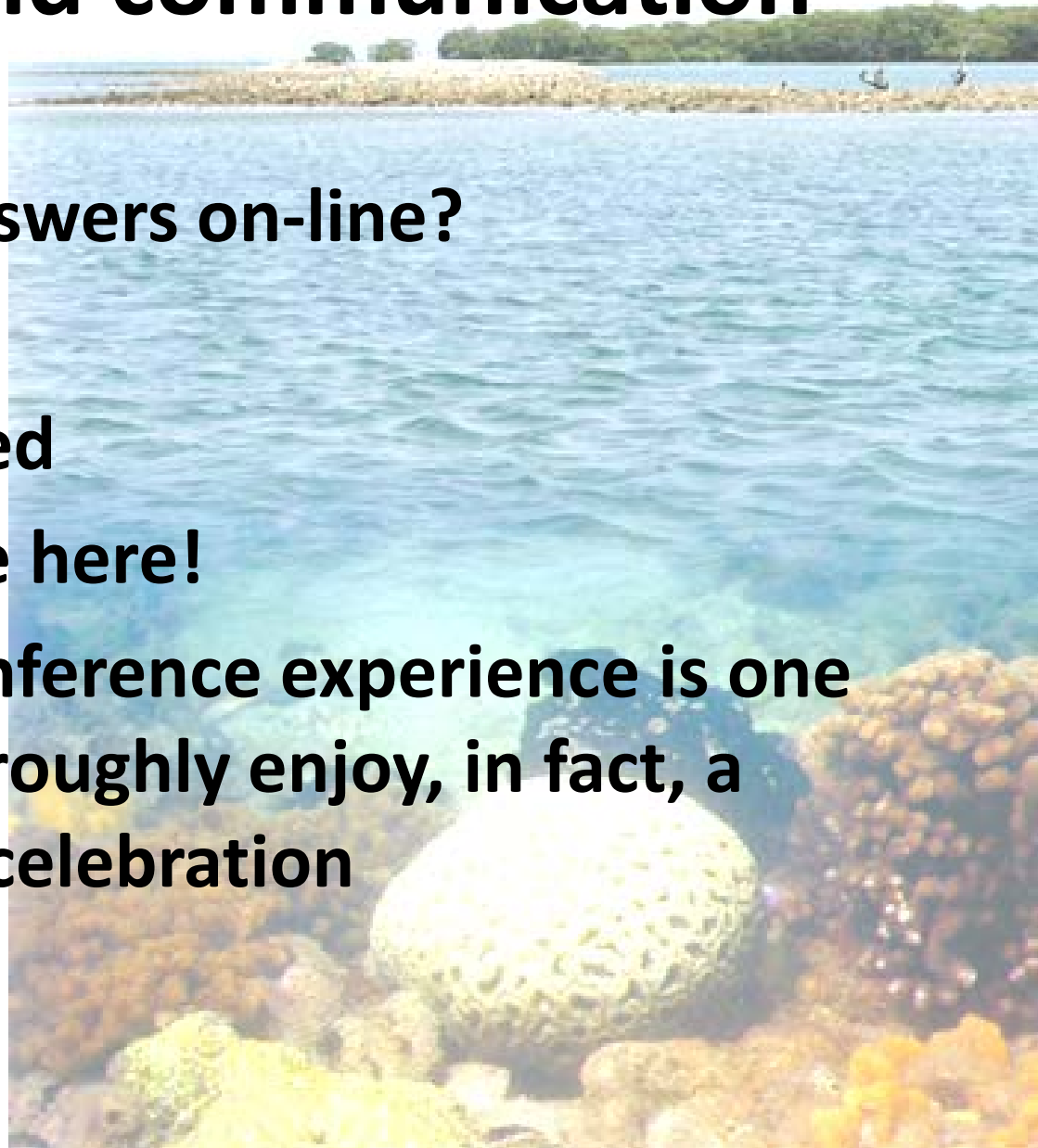
- **Education**
 - Embedded in the health training package
- **Succession-planning**
 - Age
 - “Coral, Dawn, Ken → Jessica, Maria, Jose”



Community and communication

- Questions and answers on-line?
- Blogs?
- Face-to-face valued
- That's why we are here!

**We hope your conference experience is one
you will thoroughly enjoy, in fact, a
celebration**



After 35 years, another milestone!
With celebration, and with hope



Matthew's 1st birthday, August 2012